



Oaky Creek Coal Surface to in-seam Presentation Mackay 25th October 2002





Oaky Creek Coal Surface to in seam Presentation



Mackay 25th October 2002

Introduction

- ❖ Reason for Surface to in seam Project
- ❖ Outcomes
- ❖ Operational issues
- ❖ Future opportunities



Oaky Creek Coal Surface to in seam Presentation



Mackay 25th October 2002

Reason for Surface to Inseam

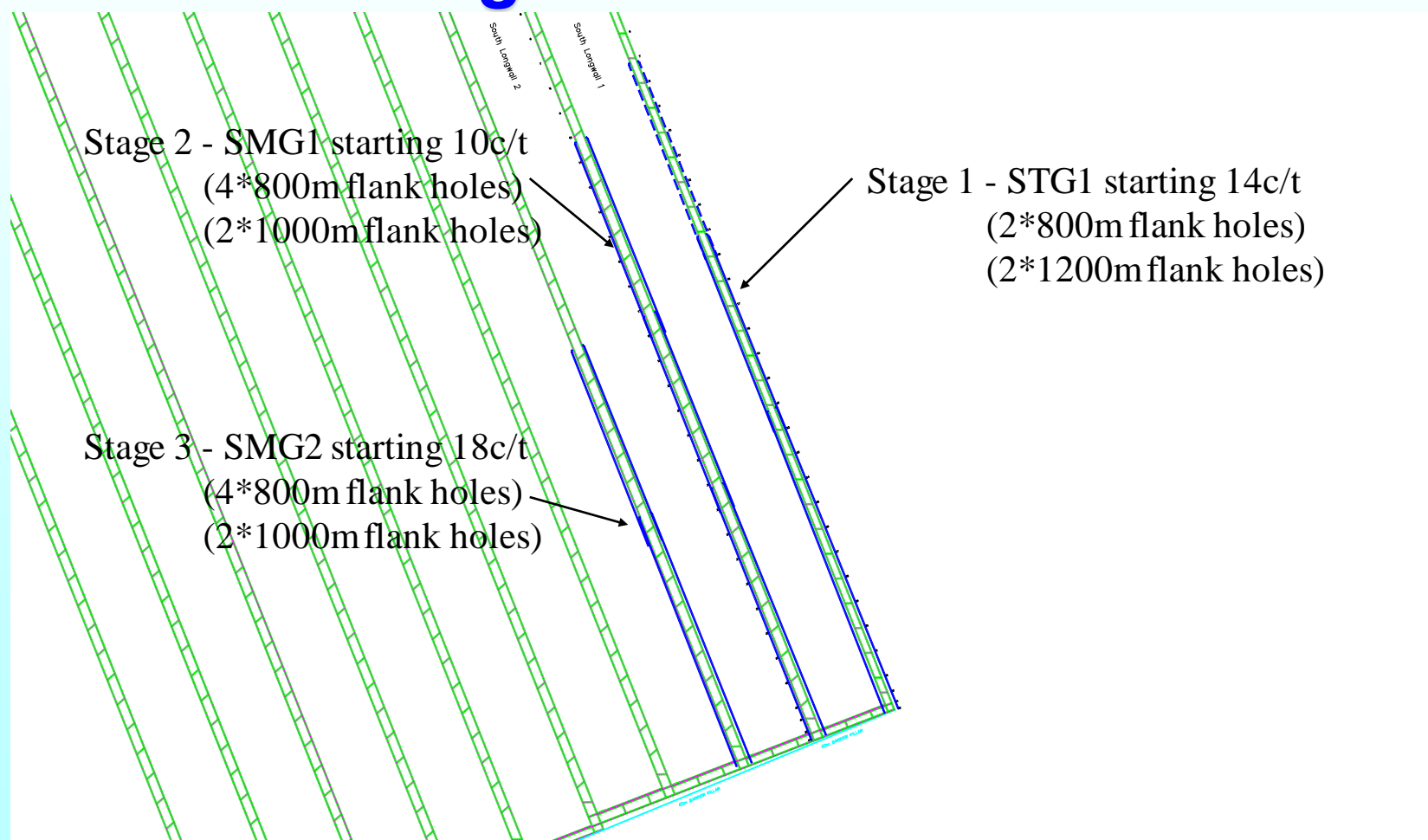
- ❖ Time to drain new area.
- ❖ Access to drain gateroads
- ❖ Longwall float / development lead time and business risk
- ❖ Opportunity cost

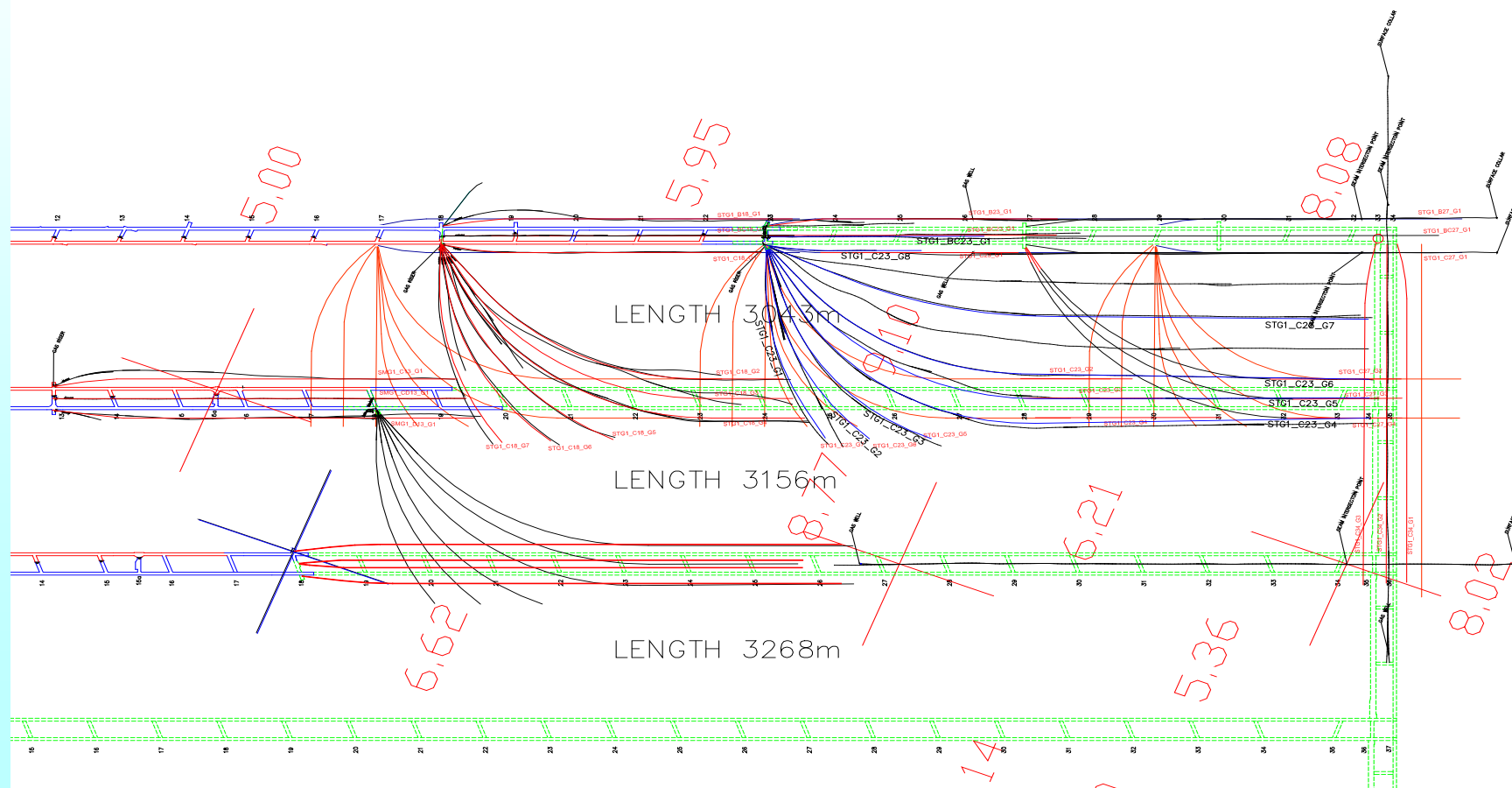
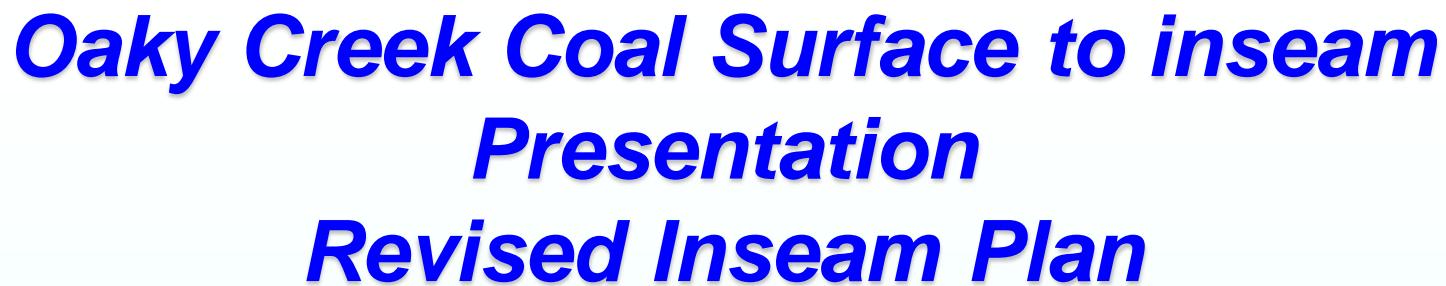


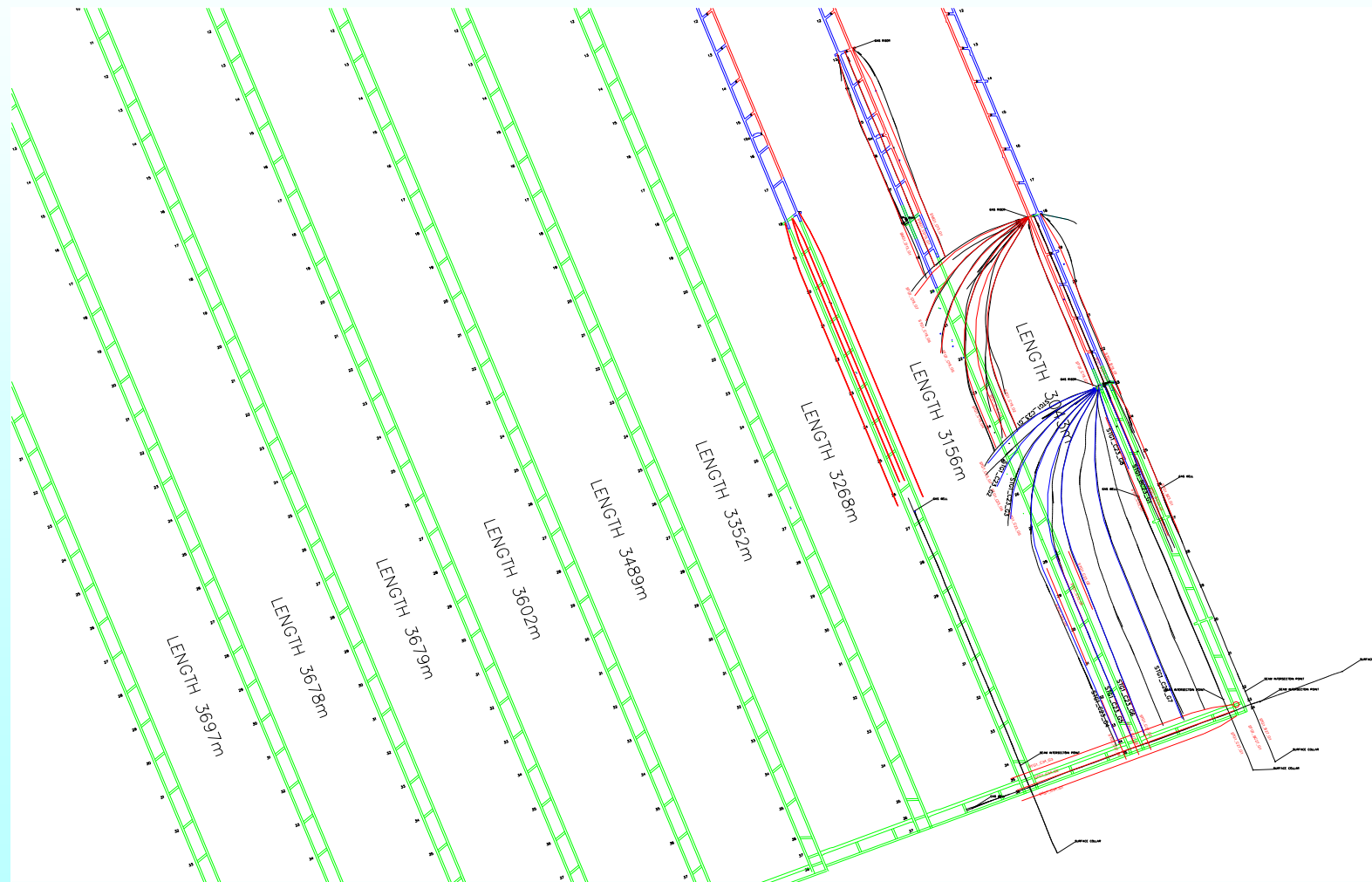
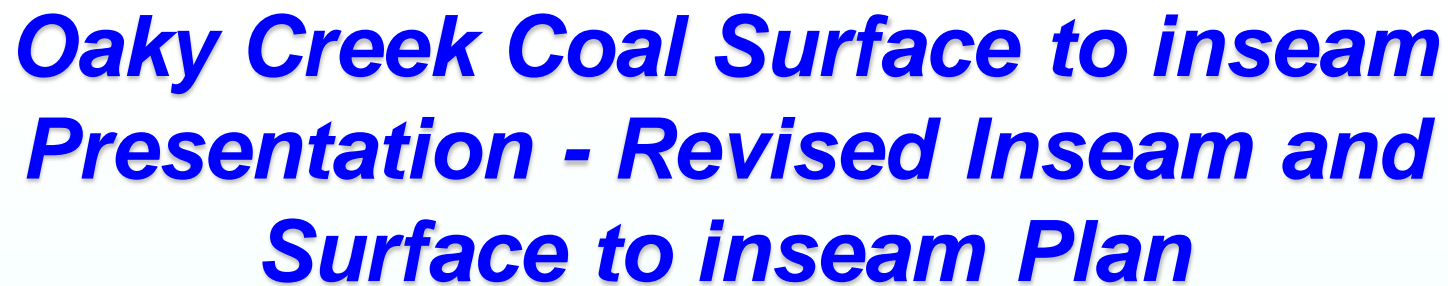
Oaky Creek Coal Surface to in seam

Presentation

Original Inseam Plan









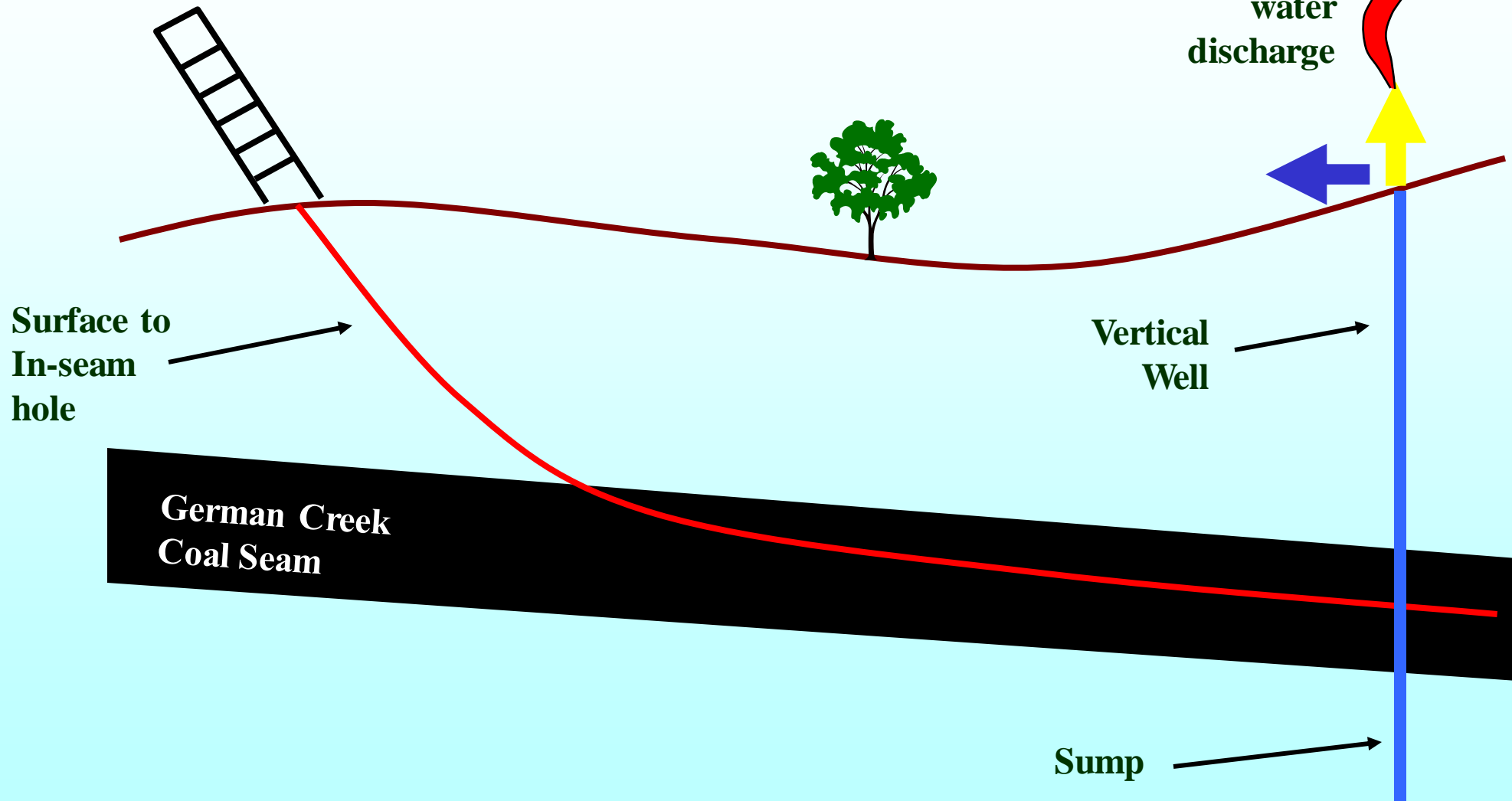
Oaky Creek Coal Surface to in seam Presentation - Outcomes



- ❖ Regained 2 months float in STG1 and SMG1
- ❖ Confirmed surface to in seam could be performed by two drilling companies and assessed performance for future projects
- ❖ Confirmed geological data
- ❖ Gained permeability and hole flow knowledge
- ❖ Gave OCC options for future Gas Drainage
- ❖ Reduce gas reservoir by half in 4 months



Oaky Creek Coal Surface to in-seam Presentation - schematic





Oaky Creek Coal Surface to in-seam Presentation - Slant and Vertical wells





Oaky Creek Coal Surface to in seam Presentation Operational Issues



- ❖ Site preparation
- ❖ Availability of infrastructure
- ❖ Surface water management
- ❖ Intensity of monitoring required
- ❖ Determination of water level in hole
- ❖ Control of Gas Desorption.
- ❖ Interaction of in seam holes with Surface to Inseam holes

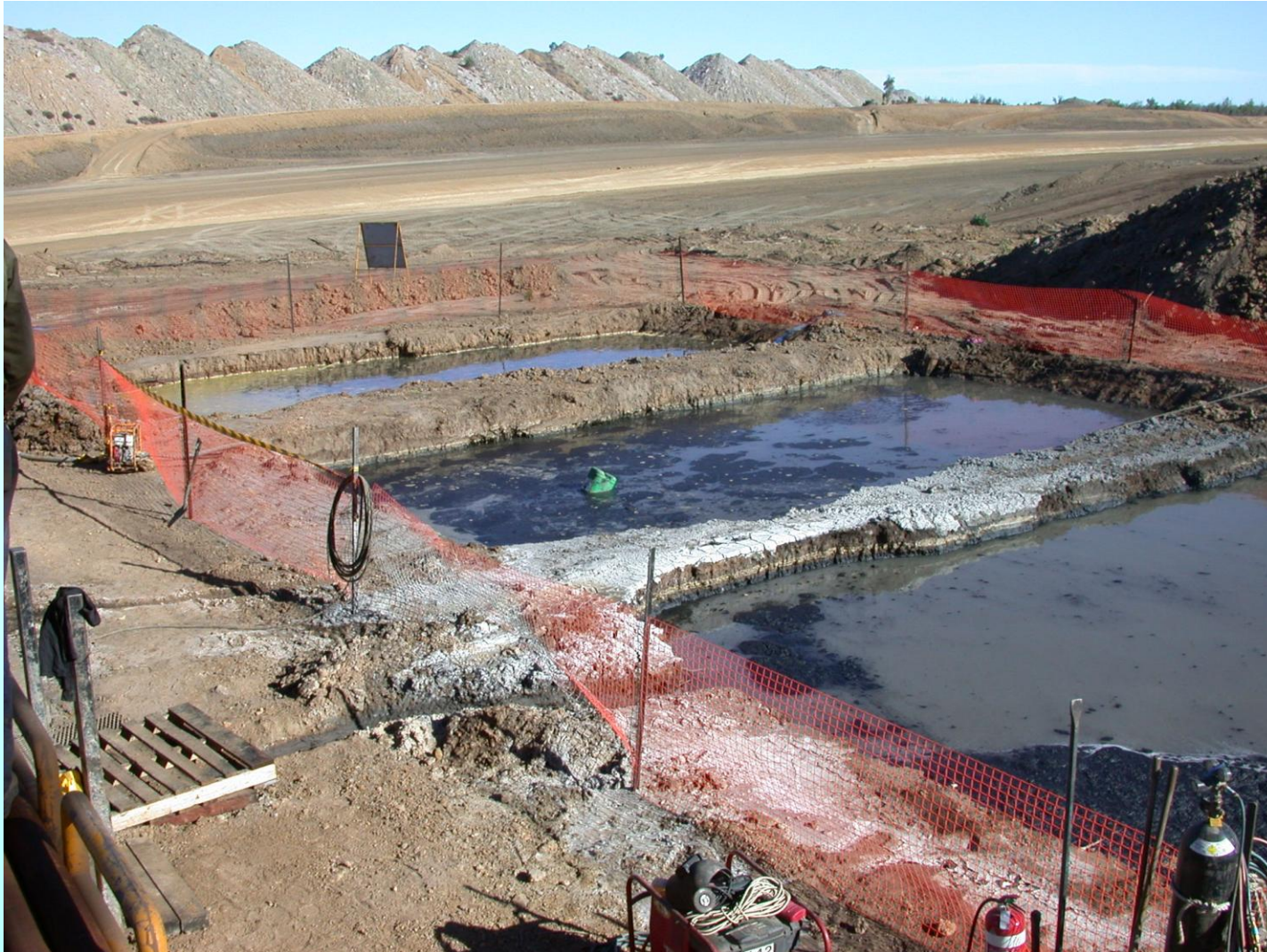


Surface Infrastructure





Water Containment (during drilling)





Salty Water





Salty Water Containment - Surge Dam (during well production)





Water Containment (during well production)





Water Containment (during well production)





Monitoring





Oaky Creek Coal Surface to in seam Presentation



Future Opportunities

- ❖ Utilisation of gas to power pumps or other OCC ancillary equipment (ie dewatering pumps in pits)
- ❖ Telemetric monitoring
- ❖ Piezometer instead of echometer
- ❖ Increased drilling distance achievable
- ❖ Different drilling patterns available
- ❖ Geophysical logging of hole

